

The correct frame size and saddle height – road racing bikes

The proper stride length multiplied by 0.665 and yields the theoretical value of the frame size in the unit cm.

Important: the result refers to the German way of measuring!

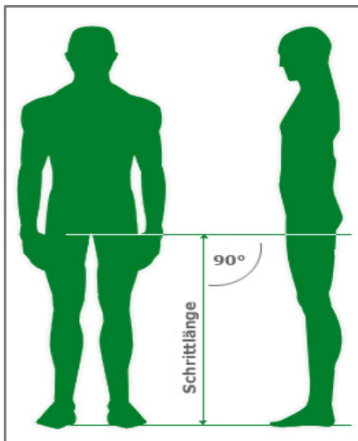
The theoretical value between two sizes, is:

- under competition-oriented cyclists rather smaller size
- for sporty cyclists style rather the next larger size

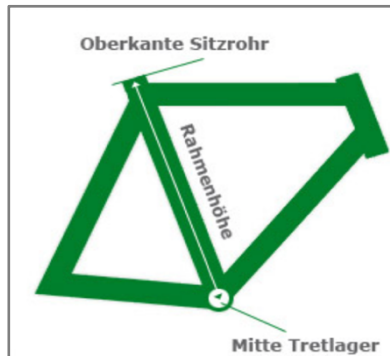
stride length (cm) x 0.665 = frame height in cm (mid bottom breaker – top edge seat tube)

stride length (cm) x 0.885 = saddle height in cm (mid bottom breaker – top edge saddle)

stride length (cm)

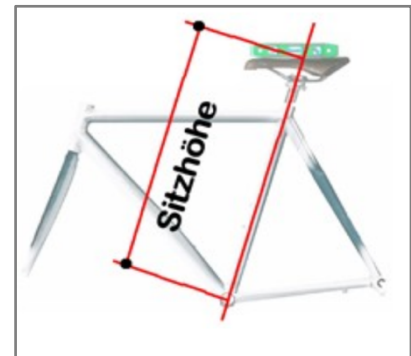


frame height (cm)

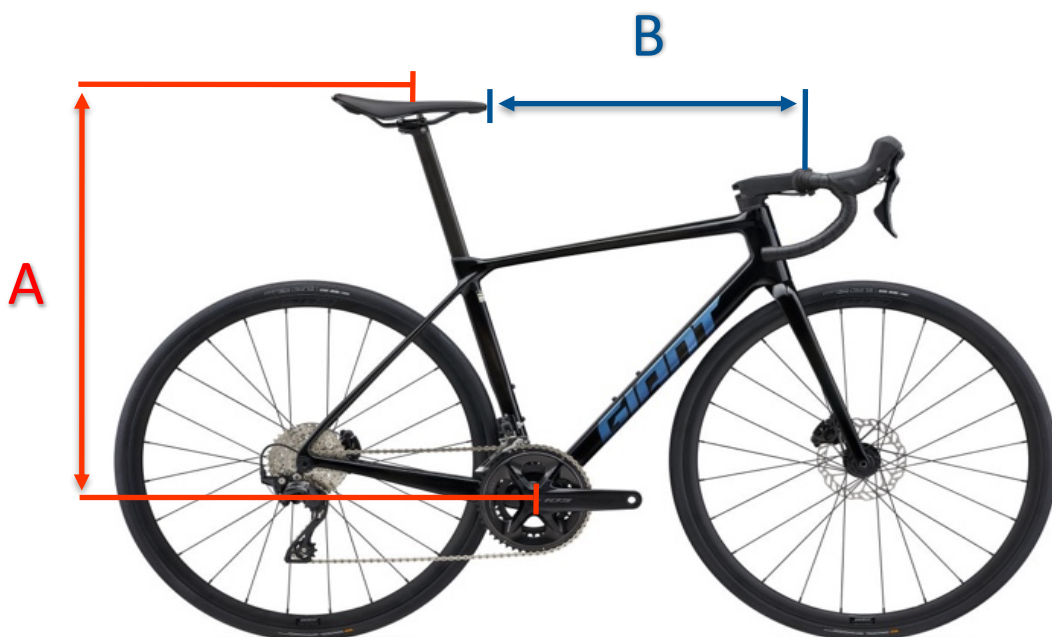


mid bottom breaker – top edge seat tube

saddle height (cm)



mid bottom breaker – top edge saddle



CANYON

ULTIMATE – CARBON – DI2 ULTEGRA

Body height	Frame height Canyon	stem - mm	size A: cm	size B: cm
*155/165 - 172 cm	XS (467)	80	*56 / 63 - 75	45 - 51
172 - 177 cm	S (494)	90	63 - 79	47 - 53
177 - 182 cm	M (522)	100	71 - 82	49 - 55
182 - 187 cm	L (554)	110	75 - 85	52 - 58
187 - 192 cm	XL (584)	110	78 - 88	53 - 59

*155 cm with shortest seat post *A: 56 cm with shortest seat post

GIANT

TCR ADVANCED 2 KOM – CARBON – 105

Body height	Seat tube length (mm)	stem - mm	size A: cm	size B: cm
145 - 157 cm	XXS (390)	80	*54 / 64 - 73	42 - 50
157 - 169 cm	XS (425)	80	*55 / 65 - 76	44 - 53
165 - 175 cm	S (445)	90	*55 / 65 - 78	47 - 56
171 - 181 cm	M (470)	100	*56 / 65 - 81	49 - 60
177 - 187 cm	ML (500)	110	*59 / 65 - 84	51 - 62
183 - 193 cm	L (530)	110	*61 / 65 - 87	52 - 64
189 - 199 cm	XL (560)	120		

*A: 54,55,56,59,61 cm with shortest seat post

CANYON

ENDURACE – ALUMINIUM – ULTEGRA

Body height	Frame height Canyon	stem - mm	size A: cm	size B: cm
*155/165 - 172 cm	XS (465)	80	*56 / 62 - 74	43 - 47
172 - 177 cm	S (505)	90	62 - 78	46 - 50
177 - 182 cm	M (537)	100	64 - 82	48 - 52
182 - 187 cm	L (563)	110	68 - 84	50 - 54
187 - 192 cm	XL (585)	110	70 - 86	52 - 56
192 - 197 cm	2XL (610)	120	72 - 88	54 - 58
197 - 204 cm	3XL (635)	120	74 - 92	56 - 60

*155 cm with shortest seat post *A: 56 cm with shortest seat post

 **GIANT**
ROAD E+ 1 PRO 45KM/H

Body height	Seat tube length (mm)	stem - mm	size A: cm	size B: cm
*155/157 - 169 cm	XS (425)	80	*53 / 59 - 76	46 - 52
160 - 177 cm	S (450)	90	*56 / 68 - 79	48 - 55

***155 cm with shortes seat post** ***A: 53,56 cm with shortes seat post**

 **GIANT**
REVOLT E+ PRO XR | 32 KM/H

Body height	Seat tube length (mm)	stem - mm	size A: cm	size B: cm
168 - 180 cm	M (475)	90	*56 / 65 - 78	48 - 56
175 - 185 cm	ML (500)	100	*58 / 65 - 81	50 - 58
181 - 192 cm	L (525)	110	*61 / 67 - 86	52 - 61

***A: 56,58,61 cm with shortes seat post**

 **GIANT**
TALON E+ 1 29ER 32KM/H

Body height	Seat tube length (mm)	stem - mm	size A: cm	size B: cm
*150/163 - 172 cm	S (405)	50	*49 / 59 - 73	42 - 48
169 - 179 cm	M (468)	60	70 - 79	46 - 53
176 - 186 cm	L (505)	60	72 - 82	49 - 57

***150 cm with shortes seat post** ***A: 49 cm with shortest seat post**